

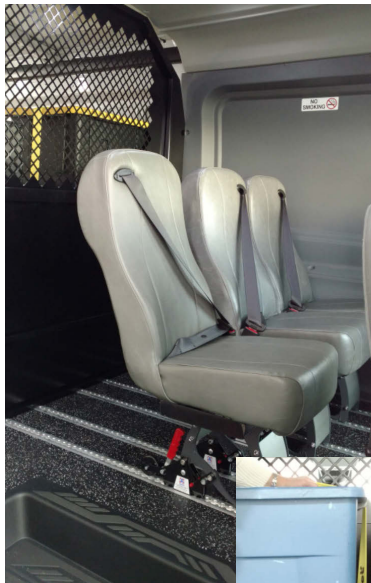


DRIVERGE
VEHICLE INNOVATIONS

FORD TRANSIT
CREW VAN

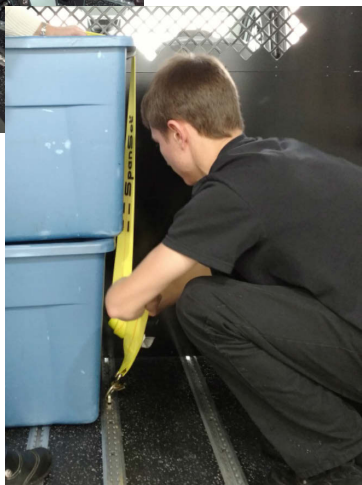


Now available with solar power technology – built for all-weather and vehicle use conditions!



ABS wall, headliner, and SmartFloor removable seats shown in front of the cargo partition.

SmartFloor tracks in the cargo area provides workers with the ability to quickly secure tie-down straps.



Vehicle Flexibility When You Need It

Combined with innovative SmartFloor technology, our crew vans allow for the easy movement or removal of seats, unlimited flexibility with its use, and workspace options that only Driverge can provide.

Standard Features

- 3 removable seats in the 2nd row provides safe, comfortable seating – or flexible cargo space
- SmartFloor tracks in the cargo area allows for quickly securing tie-downs (if ordered with that configuration)
- Durable metal partition keeps crew and cargo area separate for safer riding conditions
- Exclusive walls and headliner safety tested to meet FMVSS 201U interior head impact safety requirements
- LED lighting in 2nd row and cargo area to work at all hours

Additional Options

- Roof-mounted solar panels capable of running AC system with auxiliary compressor
- Fold-out work table in place of 2nd row middle seat
- Power inverter with AC outlets and USB charging ports

Ideas made to move

Driverge Vehicle Innovations
Ph. 844-629-5238 • Driverge.com